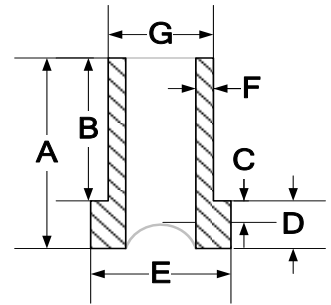


BUTT FUSION FITTINGS

BRANCH SADDLE

FOR REFERENCE ONLY

IPS & DIPS



2

Nominal Pipe Size	A Length ¹	B Length ¹	C Radius Height	D Hub Length	E Hub OD	F Wall	G OD
1" IPS (DR 9 only)	3.580" +/- .050	3.050"	.200-.250"	.515"	1.445"	.146/.175	1.315" +/- .010
mm	90.93	77.47	5.08/6.35	13.08	36.70	3.71/4.45	33.40
1 ¼" IPS	6.000" +/- .100	5.225"	.500" +.050	1.250" +.050	2.000" +.050	.151/.181	1.660" +/- .010
mm	152.40	132.72	12.70	31.75	50.80	3.83/4.60	42.16
1 ½" IPS	7.500" +/- .100	6.275"	.500" +.050	1.500" +.050	2.200" +.050	.173/.207	1.900" +/- .010
mm	190.50	159.39	12.70	38.10	55.88	4.39/5.26	48.26
2" IPS	7.600" +/- .100	5.850"	.950" +.050	1.500" +.050	2.650" +.050	.216/.259	2.375" +/- .010
mm	193.04	148.59	24.13	38.10	67.31	5.48/6.58	60.33
3" IPS	5.875" +/- .250	4.875"	*1.000" +.050	2.125" +.050	4.000" +.050	.318/.382	3.500" +/- .012
mm	149.23	123.83	25.40	53.98	101.60	8.08/9.70	88.90
4" IPS	7.500" +/- .250	4.800"	*1.500" +.050	2.500" +.050	5.000" +.110	.409/.491	4.500" +/- .015
mm	190.50	121.92	38.10	63.50	127.00	10.39/12.47	114.30
4" DIPS	7.500" +/- .250	4.800"	1.500" +.050	2.500" +.050	5.000" +.110	.436/.524	4.800" +/- .022
mm	185.42	121.92	38.10	63.50	127.00	11.08/13.30	121.92
6" IPS	9.900" +/- .250	6.625"	*1.500" +.050	3.000" +.050	7.375" +.050	.506/.607	6.625" +/- .018
mm	247.02	168.28	38.10	78.74	187.33	15.30/18.36	168.28
6" DIPS	9.750" +/- .250	6.625"	1.500" +.050	3.000" +.050	8.600" +.050	.627/.753	6.900" +/- .031
mm	247.02	168.28	38.10	76.20	218.44	15.93/19.12	175.26
8" IPS (8-14 R)	11.000" +/- .250	6.575"	2.000 ^{+050 8-14"}	4.800" +/- .050	9.250" +.050	.784/.941	8.625" +/- .025
Mm	279.40	167.01	50.80	121.92	234.95	19.92/23.90	219.08
8" IPS (16+ R)	11.000" +/- .250	6.575"	2.750 ^{+050 16+ R}	4.800" +/- .250	9.250" +.050	.784/.941	8.625" +/- .025
mm	279.40	167.01	69.85	121.92	234.95	19.92/23.90	219.08

¹ All values are nominal dimensions - OAL and Hub Height shown is blank length (e.g. 0 x 8) – Radiused saddles will vary in OAL and Hub Height

² Drawing may not be exact representation of product

Note Please contact a Rahn Customer Sales Rep for availability

Note All Wall measurements calculated using SDR 11 (unless otherwise noted)

Note See SDR Chart for other wall thicknesses

Radius Chart

Size	Radius	Size	Radius	Size	Radius
2"	1.188"	10"	5.375"		
3"	1.750"	12"	6.375"		
4"	2.250"	Ask a Rahn CSR about large radiused fittings (up to 63") now available *4x3, 6x4 and 8x6 have reduced Radius Heights for more fusion contact area (4x3 = .750", 6x4 = 1.250" and 8x6 = .850")			
6"	3.313"				
8"	4.313"				

Rahn Plastics Incorporated
 54 Ferris Dr, North Bay (Local) 1-705-495-6777
 Ontario, Canada, P1A 4M3 (Toll Free) 1-888-433-0111
www.rahnplastics.com (Fax) 1-866-495-6820