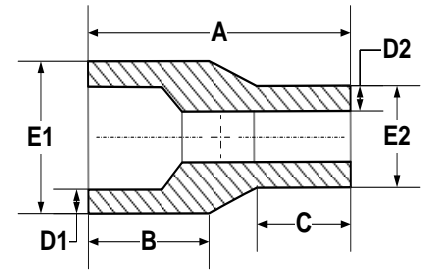


BUTT FUSION FITTINGS

IPS REDUCER

FOR REFERENCE ONLY

IPS



2

Nominal Pipe Size	A Length ¹	B Length ¹	C Length ¹	D1 Wall	D2 Wall	E1 OD	E2 OD
1 1/2" x 3/4" IPS	6.325"	3.675"	1.475"	.173/.207	.095/.115	1.900" +/-0.010	1.050" +/-0.010
mm	160.66	93.35	37.47	4.39/5.26	2.42/2.91	48.26	26.67
1 1/2" x 1" IPS	6.350"	3.700"	1.350"	.173/.207	.120/.143	1.900" +/-0.010	1.315" +/-0.010
mm	161.29	93.98	34.29	4.39/5.26	3.04/3.64	48.26	33.40
1 1/2" x 1 1/4" IPS	7.300"	1.375"	4.500"	.173/.207	.151/.181	1.900" +/-0.010	1.660" +/-0.010
mm	185.42	34.93	114.30	4.39/5.26	3.83/4.60	48.26	42.16
2" x 3/4" IPS	5.975"	2.750"	1.425"	.216/.259	.095/.115	2.375" +/-0.010	1.050" +/-0.010
mm	151.77	69.85	36.20	5.48/6.58	2.42/2.91	60.33	26.67
2" x 1" IPS	6.150"	3.000"	1.525"	.216/.259	.120/.143	2.375" +/-0.010	1.315" +/-0.010
mm	156.21	76.20	38.74	5.48/6.58	3.04/3.64	60.33	33.40
2" x 1 1/4" IPS	6.225"	2.975"	2.275"	.216/.259	.151/.181	2.375" +/-0.010	1.660" +/-0.010
mm	158.12	75.57	57.79	5.48/6.58	3.83/4.60	60.33	42.16
2" x 1 1/2" IPS	7.200"	3.125"	2.800"	.216/.259	.173/.207	2.375" +/-0.010	1.900" +/-0.010
mm	182.88	79.38	71.12	5.48/6.58	4.39/5.26	60.33	48.26
3" x 2" IPS	6.900"	3.175"	2.525"	.318/.382	.216/.259	3.500" +/-0.012	2.375" +/-0.010
mm	175.26	80.65	64.14	8.08/9.70	5.48/6.58	88.90	60.33
4" x 2" IPS	8.000"	3.000"	2.400"	.409/.491	.216/.259	4.500" +/-0.015	2.375" +/-0.010
mm	203.20	76.20	60.96	10.39/12.47	5.48/6.58	114.30	60.33
4" x 3" IPS	7.575"	3.000"	3.000"	.409/.491	.318/.382	4.500" +/-0.015	3.500" +/-0.012
mm	192.41	76.20	76.20	10.39/12.47	8.08/9.70	114.30	88.90
5" x 4" IPS	4.250"	2.300"	1.600"	.506/.607	.409/.491	5.563" +/-0.016	4.500" +/-0.015
mm	107.95	58.42	40.64	12.85/15.41	10.39/12.47	141.30	114.30
6" x 4" IPS	3.800"	1.825"	1.460"	.602/.723	.409/.491	6.625" +/-0.018	4.500" +/-0.015
mm	96.52	46.36	37.08	15.30/18.36	10.39/12.47	168.28	114.30
8" x 6" IPS	4.000"	1.750"	1.350"	.784/.941	.602/.723	8.625" +/-0.025	6.625" +/-0.018
mm	101.60	44.45	34.29	19.92/23.90	15.30/18.36	219.08	168.28
10" x 8" IPS	4.000"	2.075"	1.000"	.977/1.173	.784/.941	10.750" +/-0.027	8.625" +/-0.025
mm	101.60	52.71	25.40	24.82/29.79	19.92/23.90	273.05	219.08
12" x 10" IPS	4.325"	2.250"	0.900"	1.159/1.391	.977/1.173	12.750" +/-0.036	10.750" +/-0.027
mm	109.86	57.15	22.86	29.44/35.33	24.82/29.79	323.85	273.05
14" x 12" IPS	4.900"	2.000"	2.000"	1.273/1.527	1.159/1.391	14.000" +/-0.063	12.750" +/-0.036
mm	124.46	50.80	50.80	32.33/38.79	29.44/35.33	355.60	323.85
16" x 14" IPS	4.650"	1.825"	2.585"	1.455/1.745	1.273/1.527	16.000" +/-0.072	14.000" +/-0.063
mm	118.114	46.36	65.66	36.95/44.33	32.33/38.79	406.40	355.60

¹ All values are nominal dimensions

² Drawing may not be exact representation of product

Note: Please contact a Rahn Customer Sales Rep for availability

Note: All Wall measurements calculated using SDR 11

Note: See SDR Chart for other wall thicknesses