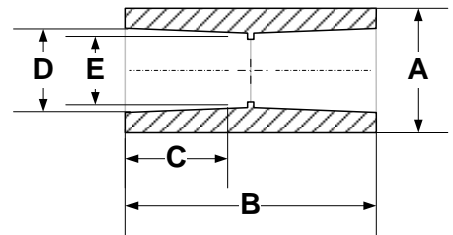


# SOCKET FUSION FITTINGS

# COUPLING

FOR REFERENCE ONLY

(SOCKET) IPS & CTS



2

Nominal Pipe Size	A Length <sup>1</sup>	B Length <sup>1</sup>	C Socket Length	D Socket Entrance	E Socket Bottom
<b>½" CTS</b>	1.100"	2.250"	0.625"	.585" +.010/-.007	.575" +.010/-.007
mm	27.94	57.15	15.88	14.86	14.61
<b>½" IPS</b>	1.200"	2.000"	0.575"	.810" +.005/-.010	.804" +.005/-.026
mm	30.48	50.80	14.61	20.57	20.42
<b>¾" CTS</b>	1.400"	1.750"	0.625"	.835" +/--.010	.825" +/--.010
mm	35.56	44.45	15.88	21.21	20.96
<b>¾" IPS</b>	1.400"	1.750"	0.625"	1.020" +/--.008	1.012" +.008/-.012
mm	35.56	44.45	15.88	25.91	25.70
<b>1" CTS</b>	1.850"	1.550"	0.625"	1.075" +/--.008	1.070" +.008/-.012
mm	46.99	39.37	15.88	27.30	27.18
<b>1" IPS</b>	1.850"	1.550"	0.685"	1.275" +/--.008	1.267" +.008/-.012
mm	46.99	39.37	17.40	32.38	32.18
<b>1 ¼" IPS</b>	2.300"	2.000"	0.875"	1.620" +/--.008	1.612" +.008/-.016
mm	58.42	50.80	22.23	41.15	40.94
<b>1 ½" IPS</b>	2.500"	2.050"	0.875"	1.860" +/--.010	1.849" +.010/-.020
mm	63.50	52.07	22.23	47.24	46.96
<b>2" IPS</b>	3.000"	2.250"	0.875"	2.335" +/--.010	2.324" +.010/-.020
mm	76.20	57.15	22.23	59.31	59.03
<b>3" IPS</b>	4.250"	2.700"	1.000"	3.455" +/--.015	3.439" +.015/-.025
mm	107.95	68.58	25.40	87.76	87.35
<b>4" IPS</b>	5.900"	3.400"	1.125"	4.450" +/--.015	4.434" +.015/-.035
mm	149.86	86.36	28.58	113.03	112.62

<sup>1</sup> All values are nominal dimensions

<sup>2</sup> Drawing may not be exact representation of product

Note Please contact a Rahn Customer Sales Rep for availability



Rahn Plastics Incorporated  
 54 Ferris Dr, North Bay  
 Ontario, Canada, P1A 4M3  
[www.rahnplastics.com](http://www.rahnplastics.com)

(Local) 1-705-495-6777  
 (Toll Free) 1-888-433-0111  
 (Fax) 1-866-495-6820