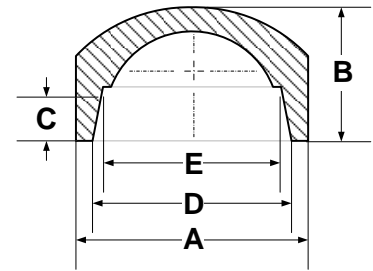


SOCKET FUSION FITTINGS

END CAP

FOR REFERENCE ONLY

(SOCKET) IPS & CTS



2

Nominal Pipe Size	A Length ¹	B Length ¹	C Socket Length	D Socket Entrance	E Socket Bottom
1/2" CTS	1.100"	1.600"	0.625"	.585" +.010/-007	.575" +.010/-007
mm	27.94	40.64	15.88	14.86	14.61
1/2" IPS	1.350"	1.050"	0.575"	.810" +.005/-010	.804" +.005/-026
mm	34.29	26.67	14.61	20.57	20.42
3/4" CTS	1.400"	1.050"	0.625"	.835" +/-010	.825" +/-010
mm	35.56	26.67	15.88	21.21	20.96
3/4" IPS	1.425"	1.150"	0.625"	1.020" +/-008	1.012" +.008/-012
mm	36.20	29.21	15.88	25.91	25.70
1" CTS	1.700"	1.200"	0.625"	1.075" +/-008	1.070" +.008/-012
mm	43.18	30.48	15.88	27.30	27.18
1" IPS	1.850"	1.650"	0.685"	1.275" +/-008	1.267" +.008/-012
mm	46.99	41.91	17.40	32.38	32.18
1 1/4" IPS	2.250"	1.700"	0.875"	1.620" +/-008	1.612" +.008/-016
mm	57.15	43.18	22.23	41.15	40.94
1 1/2" IPS	2.625"	1.750"	0.875"	1.860" +/-010	1.849" +.010/-020
mm	66.68	44.45	22.23	47.24	46.96
2" IPS	3.050"	2.000"	0.875"	2.335" +/-010	2.324" +.010/-020
mm	77.47	50.80	22.23	59.31	59.03
3" IPS	4.350"	2.450"	1.000"	3.455" +/-015	3.439" +.015/-025
mm	110.49	62.23	25.40	87.76	87.35
4" IPS	6.375"	4.500"	1.125"	4.450" +/-015	4.434" +.015/-035
mm	161.93	114.30	28.58	113.03	112.62

¹ All values are nominal dimensions

² Drawing may not be exact representation of product

Note Please contact a Rahn Customer Sales Rep for availability



Rahn Plastics Incorporated

54 Ferris Dr, North Bay (Local) 1-705-495-6777
 Ontario, Canada, P1A 4M3 (Toll Free) 1-888-433-0111
www.rahnplastics.com (Fax) 1-866-495-6820