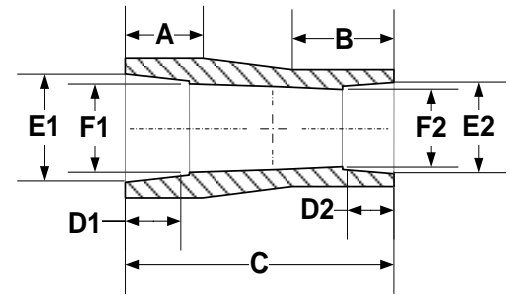


SOCKET FUSION FITTINGS

REDUCING COUPLING

FOR REFERENCE ONLY

(SOCKET) IPS & CTS



2

Nominal Pipe Size	A Length ¹	B Length ¹	C Length ¹	D1 Socket Length	E1 Socket Entrance	F1 Socket Bottom	D2 Socket Length	E2 Socket Entrance	F2 Socket Bottom
¾" IPS x ½" CTS	1.130"	1.020"	2.165"	0.625"	1.020" +/- .008	1.012" +.008/-.012	0.625"	.585" +.010/-.007	.575" +.010/-.007
mm	28.70	25.91	54.99	15.88	25.91	25.70	15.88	14.86	14.61
¾" IPS x ¾" CTS	1.000"	1.000"	2.000"	0.625"	1.020" +/- .008	1.012" +.008/-.012	0.625"	.835" +/- .010	.825" +/- .010
mm	25.40	25.40	50.80	15.88	25.91	25.70	15.88	21.21	20.96
1" IPS x ½" CTS	1.260"	0.880"	2.150"	0.685"	1.275" +/- .008	1.267" +.008/-.012	0.625"	.585" +.010/-.007	.575" +.010/-.007
mm	32.00	22.35	54.61	17.40	32.38	32.18	15.88	14.86	14.61
1" IPS x ¾" IPS	.950"	.950"	1.900"	.685"	1.275" +/- .008	1.267" +.008/-.012	0.625"	1.020" +/- .008	1.012" +.008/-.012
mm	24.13	24.13	48.26	17.40	32.38	32.18	15.88	25.91	25.70
1" IPS x 1" CTS	0.950"	0.950"	1.900"	0.685"	1.275" +/- .008	1.267" +.008/-.012	0.625"	1.075" +/- .008	1.070" +.008/-.012
mm	24.13	24.13	48.26	17.40	32.38	32.18	15.88	27.30	27.18
1 ¼" IPS x 1" CTS	1.315"	0.740"	2.065"	0.875"	1.620" +/- .008	1.612" +.008/-.016	0.625"	1.075" +/- .008	1.070" +.008/-.012
mm	33.40	18.80	52.45	22.23	41.15	40.94	15.88	27.30	27.18
1 ¼" IPS x ¾" IPS	1.150"	0.690"	1.850"	0.875"	1.620" +/- .008	1.612" +.008/-.016	0.625"	1.020" +/- .008	1.012" +.008/-.012
mm	29.21	17.53	46.61	22.23	41.15	40.94	15.88	25.91	25.70
1 ¼" IPS x 1" IPS	1.185"	0.700"	1.835"	0.875"	1.620" +/- .008	1.612" +.008/-.016	0.685"	1.275" +/- .008	1.267" +.008/-.012
mm	30.10	17.78	46.61	22.23	41.15	40.94	17.40	32.38	32.18
1 ½" IPS x 1 ¼" IPS	1.000"	1.000"	2.075"	0.875"	1.860" +/- .010	1.849" +.010/-.020	0.875"	1.620" +/- .008	1.612" +.008/-.016
mm	25.40	25.40	52.71	22.23	47.24	46.96	22.23	41.15	40.94
2" IPS x ¾" IPS	1.400"	0.575"	1.980"	0.875"	2.335" +/- .010	2.324" +.010/-.020	0.625"	1.020" +/- .008	1.012" +.008/-.012
mm	35.56	14.61	50.29	22.23	59.31	59.03	15.88	25.91	25.70
2" IPS x 1" IPS	1.385"	0.570"	1.965"	0.875"	2.335" +/- .010	2.324" +.010/-.020	0.685"	1.275" +/- .008	1.267" +.008/-.012
mm	35.18	14.48	49.91	22.23	59.31	59.03	17.40	32.38	32.18
2" IPS x 1 ¼" IPS	1.300"	0.815"	2.115"	0.875"	2.335" +/- .010	2.324" +.010/-.020	0.875"	1.620" +/- .008	1.612" +.008/-.016
mm	33.02	20.70	53.72	22.23	59.31	59.03	22.23	41.15	40.94
2" IPS x 1 ½" IPS	1.300"	0.800"	2.125"	0.875"	2.335" +/- .010	2.324" +.010/-.020	0.875"	1.860" +/- .010	1.849" +.010/-.020
mm	33.02	20.32	53.98	22.23	59.31	59.03	22.23	47.24	46.96
3" IPS x 2" IPS	1.840"	0.980"	2.840"	1.000"	3.455" +/- .015	3.439" +.015/-.025	0.875"	2.335" +/- .010	2.324" +.010/-.020
mm	46.74	24.89	72.14	25.40	87.76	87.35	22.23	59.31	59.03
4" IPS x 2" IPS	2.600"	0.945"	3.550"	1.125"	4.450" +/- .015	4.434" +.015/-.035	0.875"	2.335" +/- .010	2.324" +.010/-.020
mm	66.04	24.00	90.17	28.58	113.03	112.62	22.23	59.31	59.03
4" IPS x 3" IPS	2.100"	1.300"	3.450"	1.125"	4.450" +/- .015	4.434" +.015/-.035	1.000"	3.455" +/- .015	3.439" +.015/-.025
mm	53.34	33.02	87.63	28.58	113.03	112.62	25.40	87.76	87.35

¹All values are nominal dimensions ²Drawing may not be exact representation of product ^{Note}Please contact a Rahn Customer Sales Rep for availability