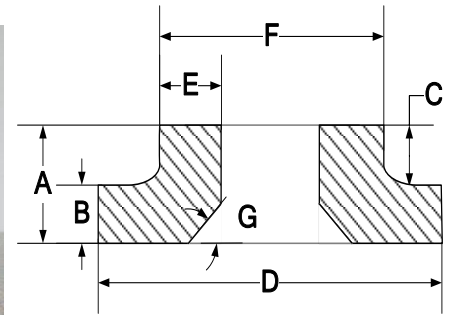


BUTT FUSION FITTINGS

B/V STUB END

FOR REFERENCE ONLY

IPS



2

Nominal Pipe Size	A Height ¹	B Flange Thickness	C Length ¹	D Flange OD	E Wall	F OD	G Angle
1 1/2" IPS	1.425"	.375"/.475"	1.025"	3.844" ^{+0.050}	.173/.207	1.900" ^{+/-0.010}	45° ^{+/-1°}
mm	36.20	9.52/12.07	26.04	97.64	4.39/5.26	48.26	
2" IPS	1.750"	.375"/.475"	1.350"	3.844" ^{+0.050}	.216/.259	2.375" ^{+/-0.010}	
mm	44.45	9.52/12.07	34.29	97.64	5.48/6.58	60.33	
3" IPS	2.250"/2.350"	.375"/.475"	1.650"	4.800" ^{+0.050}	.318/.382	3.500" ^{+/-0.012}	
mm	57.15/59.69	17.00/19.54	41.91	121.92	8.08/9.70	88.90	
4" IPS	1.765"/1.825"	.670"/.770"	0.725"	6.600" ^{+0.050}	.409/.491	4.500" ^{+/-0.015}	
mm	44.83/46.	25.40/27.94	18.42	167.64	10.39/12.47	114.30	
5" IPS	1.700"/1.800"	1.000"/1.100"	0.700"	7.550" ^{+0.050}	.506/.607	5.563" ^{+/-0.016}	
mm	43.18/45.72	25.40/27.94	17.78	191.77	12.85/15.41	141.30	
6" IPS	2.100"/2.250"	1.125"/1.225"	0.925"	8.600" ^{+0.050}	.602/.723	6.625" ^{+/-0.018}	
mm	53.34/57.15	28.58/31.12	23.50	218.44	15.30/18.36	168.28	
8" IPS	2.150"/2.300"	1.375"/1.357"	0.775"	10.700" ^{+0.050}	.784/.941	8.625" ^{+/-0.025}	
mm	54.62/58.42	34.93/37.47	19.69	271.78	19.92/23.90	219.08	
10" IPS	2.678"/2.756"	1.500"/1.600"	1.075"	12.750" ^{+0.050}	.977/1.173	10.750" ^{+/-0.027}	
mm	68.02/70.00	38.10/40.64	27.31	323.85	24.82/29.79	273.05	
12" IPS	3.071"/3.229"	1.700"/1.788"	1.425"	15.500" ^{+0.050}	1.159/1.391	12.750" ^{+/-0.036}	
mm	78.00/82.02	43.18/45.72	36.20	393.70	29.44/35.33	323.85	

¹ All values are nominal dimensions

² Drawing may not be exact representation of product

Note See SDR Chart for other wall thicknesses

Note All Wall measurements calculated using SDR 11

Note Please contact a Rahn Customer Sales Rep for availability and other sizes



Rahn Plastics Incorporated
 54 Ferris Dr, North Bay (Local) 1-705-495-6777
 Ontario, Canada, P1A 4M3 (Toll Free) 1-888-433-0111
www.rahnplastics.com (Fax) 1-866-495-6820