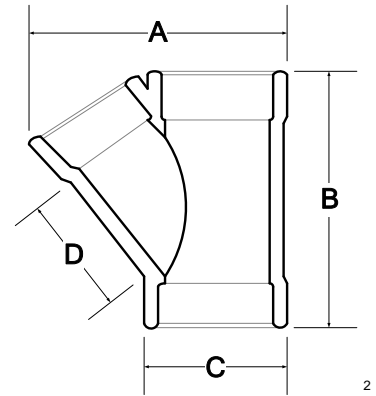


SOCKET FUSION FITTINGS

45° WYE

FOR REFERENCE ONLY

(SOCKET) IPS



Nominal Pipe Size	A Length ¹	B Length ¹	C Length ¹	D Length ¹	E Socket Length	F Socket Entrance	G Socket Bottom
1 1/2" IPS	4.050"	4.250"	2.275"	1.790"	0.875" min	1.860" ^{+/-0.010}	1.849" ^{+0.010/-0.020}
mm	102.87	107.95	57.79	45.47	22.23	47.24	46.96
2" IPS	5.100"	5.415"	2.800"	2.000"	0.875" min	2.335" ^{+/-0.010}	2.324" ^{+0.010/-0.020}
mm	129.54	137.54	71.12	50.80	22.23	59.31	59.03
3" IPS	7.600"	7.700"	4.015"	3.200"	1.000" min	3.455" ^{+/-0.015}	3.439" ^{+0.015/-0.025}
mm	193.04	195.58	101.98	81.28	25.40	87.76	87.35
4" IPS	9.100"	9.350"	5.100"	3.800"	1.125" min	4.450" ^{+/-0.015}	4.434" ^{+0.015/-0.035}
mm	231.14	237.49	129.54	96.52	28.58	113.03	112.62

¹ All values are nominal dimensions

² Drawing may not be exact representation of product

Note Please contact a Rahn Customer Sales Rep for availability



Rahn Plastics Incorporated
 54 Ferris Dr, North Bay (Local) 1-705-495-6777
 Ontario, Canada, P1A 4M3 (Toll Free) 1-888-433-0111
www.rahnpastics.com (Fax) 1-866-495-6820